

PROCRIMP®

DZR BRASS FITTINGS RANGE

Procrimp fittings make every job quick and easy, an Australian Standard Certified Product WMKA22165 and complies to AS2537:2:2011. Procrimp DZR brass fittings are available in sizes 16 and 20 millimetres.



Equal Elbows
Available sizes
16 | 20

Female Elbows Lugged
Available sizes
16x12

Equal Tees
Available sizes
16 | 20

Male Elbows
Available sizes
16x12 | 20x20

Male Unions
Available sizes
16x12 | 20x12 | 20x20

Reducing Tees
Available sizes
20x20x16C
20x16x16C
20x16x20C

Female Elbows
Available sizes
16x12 | 20x20

Female Union
Available sizes
16x12 | 20x12 | 20x20

Copper Brazing Tails
Available sizes
16 | 20

Male Elbows Lugged
Available sizes
16x12x65
16x12x90
16x12x150
16x12x200

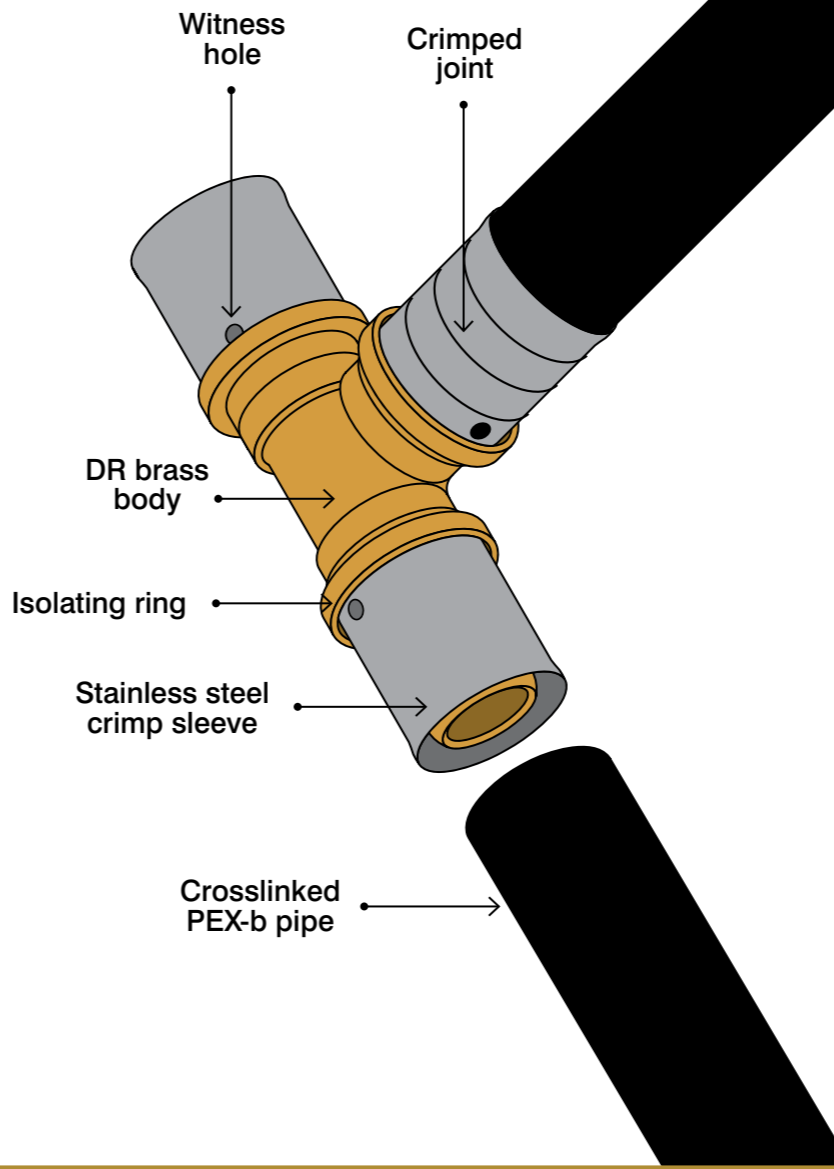
Straight Coupling
Available sizes
16 | 20

Compression Adaptors
Available sizes:
16x12 | 20x20

Reducers
Available sizes:
20x16

Also available are a range of Procrimp accessories, manual and automatic crimping tools

Our Procrimp fittings have been designed to make for a quick and easy secure joint



PROPEX® PIPE

Procrimp fittings are designed to be fitted with Propex pipe available in 16 and 20mm, in both straight lengths and coils. Propex pipes have been continuously pressure tested PN20 in accordance AS/NZS 2492:2007 – Crosslinked polyethylene (PE-X) pipes for pressure application.



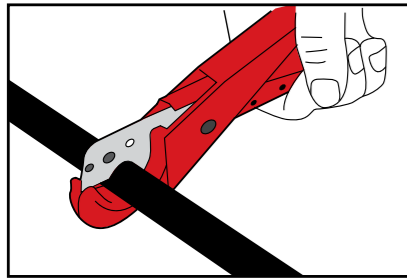
Durability, affordable efficient, resilient to extreme temperatures and chemical corrosion

Propex black pipe (cold potable water)		
16mm	5 Metre	Straight length
16mm	100 Metre	Coil
20mm	5 Metre	Straight length
20mm	100 Metre	Coil
Propex red pipe (hot potable water)		
16mm	100 Metre	Coil
20mm	100 Metre	Coil
Propex green pipe (rainwater)		
16mm	50 Metre	Coil
20mm	50 Metre	Coil
Propex lilac pipe (recycable water)		
16mm	50 Metre	Coil
20mm	50 Metre	Coil
Size	Outside diameter (mm)	Wall thickness (mm)
16mm	16.0	2.2
20mm	20.0	2.8



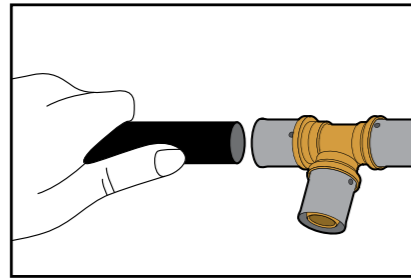
PROCRIMP® INSTALLATION*

STEP 1



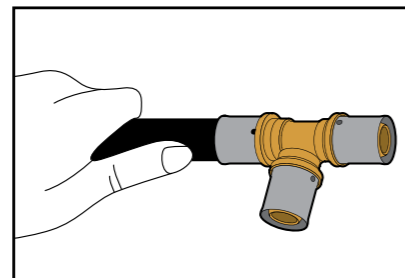
Cut the pipe square to the length of the tubing using the cutting tool. Remove excess material or burrs.

STEP 2



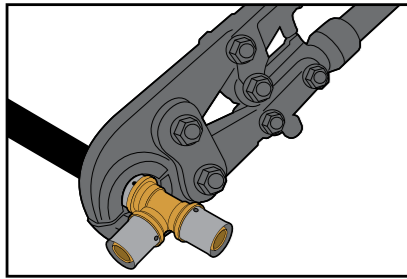
Insert pipe firmly into the crimp sleeve of the fitting body.

STEP 3



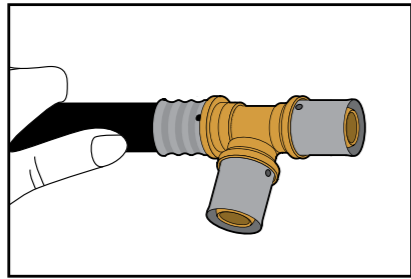
Insert until the pipe end reaches the plastic sight sleeve. Ensure pipe has reached the isolating ring by viewing through the witness hole. The blue ring should now be visible in the sight sleeve.

STEP 5



Place the crimp sleeve in the pressing tongs and press until the jaws are completely closed¹.

STEP 6



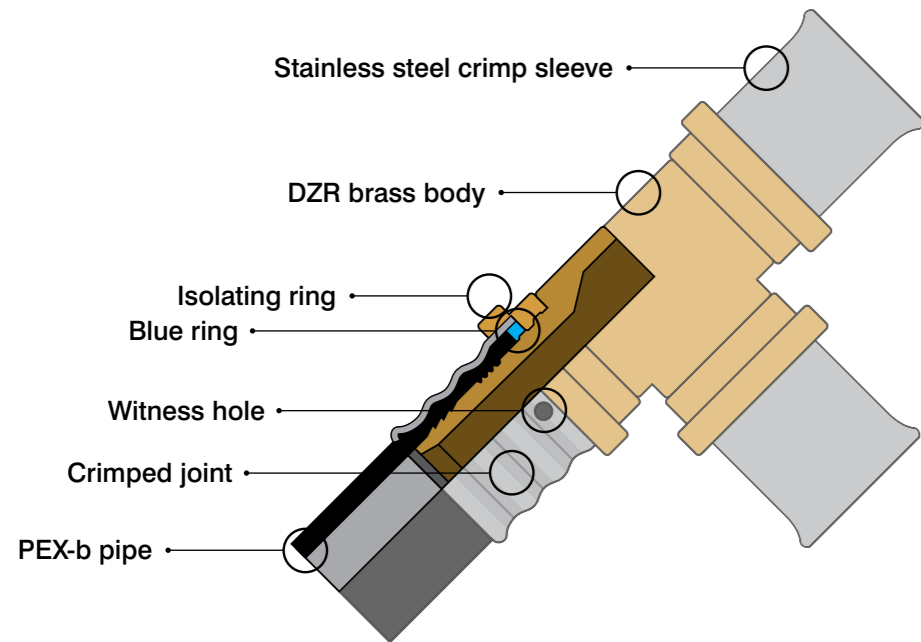
Open tongs and remove fitting, ensure the fitting body has not been damaged and that there are 3 clear crimp lines around the sleeve.



NOTE

Procrimp fittings **must be only used with Propex pipe**, warranty will be void if installed with any another pipe system.

FITTING TERMINOLOGY



- * Only use a licensed plumber.
- * Do not mix components from different manufacturers

¹ Procrimp pipe and fittings are securely jointed by the mechanical deformation of the stainless steel crimp sleeve. This deformation is achieved by using Procrimp pressing tongs. When using the automatic pressing tongs, install the pressing clamp according to the instruction manual. For the manual pressing tongs, close the jaw manually until arms touch.

PROCRIMP®

PROFESSIONAL PIPE AND FITTINGS

PROCRIMP®

PROFESSIONAL PIPE AND FITTINGS



Procrimp pipe and fitting system is backed by a 25 year warranty when installed by a licensed plumber in accordance with manufacturers installation instructions and the Australian Plumbing Code.

Licence number: **WMKA22165**

Procrimp fittings have been continuously tested in accordance to, AS/NZS 2537:2:2011 mechanical jointing fittings for use with cross linked polyethylene (PE-X) for pressure.

Procrimp fittings must be only used with Propex pipe, warranty will be void if installed with any another pipe system.



PIPE AND FITTINGS FOR WATER INSTALLATIONS



FITTING AND INSTALLATION GUIDE