

PROPEX GAS[®]

PROFESSIONAL PIPE AND FITTINGS



PIPE AND FITTINGS FOR
GAS INSTALLATIONS



FITTING AND INSTALLATION GUIDE

PROPEX GAS[®]

PROFESSIONAL PIPE AND FITTINGS

THINK GLOBALLY, ACT LOCALLY

ARIBON
PRODUCTS  www.arison.com

CONTENTS

Propex Gas DR fittings and PEX-AL-PEX pipe	2
Why depend on Propex Gas	3
Propex Gas 5 layer macro composite pipe	4
Propex Gas brass fittings	6
Propex Gas brass fitting range	7
Propex Gas pipe	9
Propex Gas installation	10
Propex Gas tools and accessories	11
Other fitting systems	12
Propex Gas 25 year warranty	14



PROPEXGAS[®]

PROPEX GAS® DR FITTINGS AND PEX-AL-PEX PIPE

GAS PIPE SYSTEMS

Propex Gas provides advanced piping solutions for gas transportation in all building applications from a residential house to industrial and commercial projects.

By integrating our advanced research and development capabilities and production scale, we are able to provide our customers with a reliable product that they can count on to get the job done.



Propex Gas is an integration of durable and flexible PE-AL-PEX pipe and DR brass fittings



The Propex Gas system pipes and fittings meets, AS/NZS 4176:8:2010 multilayer pipe systems for pressure applications

WHY DEPEND ON PROPEX GAS®

- ▶▶▶▶ Complies with Australian Standards AS4176:8:2010
- ▶▶▶▶ Competitive pricing
- ▶▶▶▶ Leak proof fitting connections
- ▶▶▶▶ Various tooling options
- ▶▶▶▶ Lightweight and easy to handle
- ▶▶▶▶ Available in lengths and coils
- ▶▶▶▶ Fast and solder free installation
- ▶▶▶▶ No open flame during installation
- ▶▶▶▶ Chemical resistant
- ▶▶▶▶ License Number: SMKP25582
- ▶▶▶▶ Carries a 25 Year Warranty



PROPEX GAS® 5 LAYER MACRO COMPOSITE PIPE

Propex Gas is macro composite pipe that consists of five layers, an inner layer of crosslinked polyethylene (PEX), overlap welded by an aluminium middle layer then covered by an outer layer of yellow coated crosslinked polyethylene (PEX), between the aluminium layer are the bonding adhesives. All layers are extruded in one step.



Propex Gas pipe uses an advanced PEX material which is non toxic, non corrosive and has a smooth bore. The middle aluminium layer allows the pipe to withstand high working pressure and is 100% impermeable to gas and oxygen. This structure provides Propex Gas pipe with the advantages of both metal and plastic while avoiding their individual weaknesses.



WHAT IS CROSSLINKED POLYETHYLENE PIPE?

Propex Gas (PEX-AL-PEX) pipe is produced, amongst other materials with crosslinked polyethylene. Crosslinking is obtained through a chemical process that increases the bonds between macromolecules to form a more complex structure than normal polyethylene.

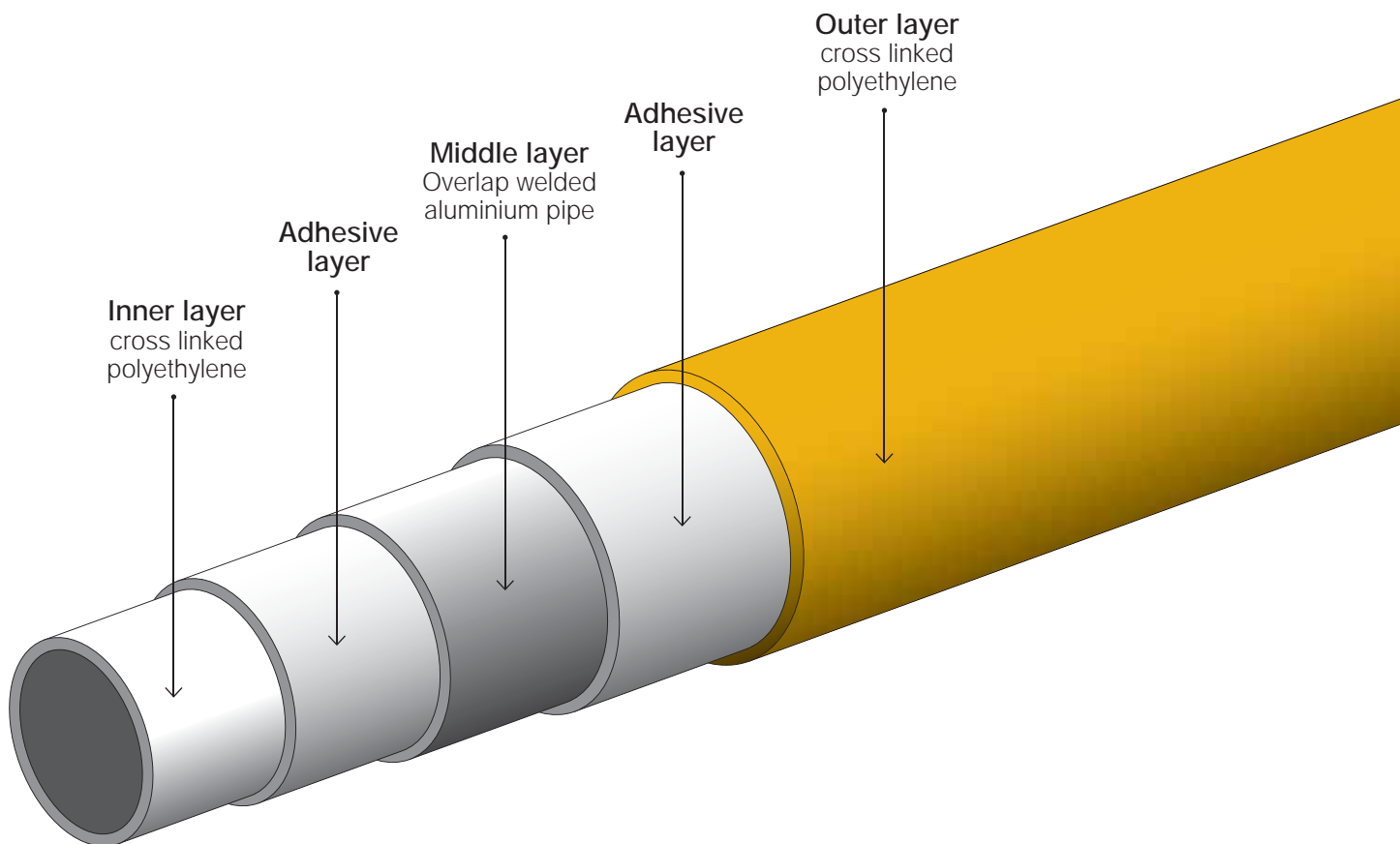
Due to crosslinking, polyethylene performance is greatly enhanced yet maintains the excellent properties of thermoplastics.

Durable, affordable,
resilient to extreme
temperatures and
chemical corrosion

BENEFITS OF PROPEX GAS[®] PEX-AL-PEX PIPE

- ▶▶▶▶ Superior physical properties
- ▶▶▶▶ Outstanding restoring force (memory effect)
- ▶▶▶▶ Ability to expand quickly and reduce slowly
- ▶▶▶▶ Excellent thermal properties
- ▶▶▶▶ 100% gas and oxygen tight
- ▶▶▶▶ Non toxic
- ▶▶▶▶ Non corrosive

PHYSICAL PROPERTIES



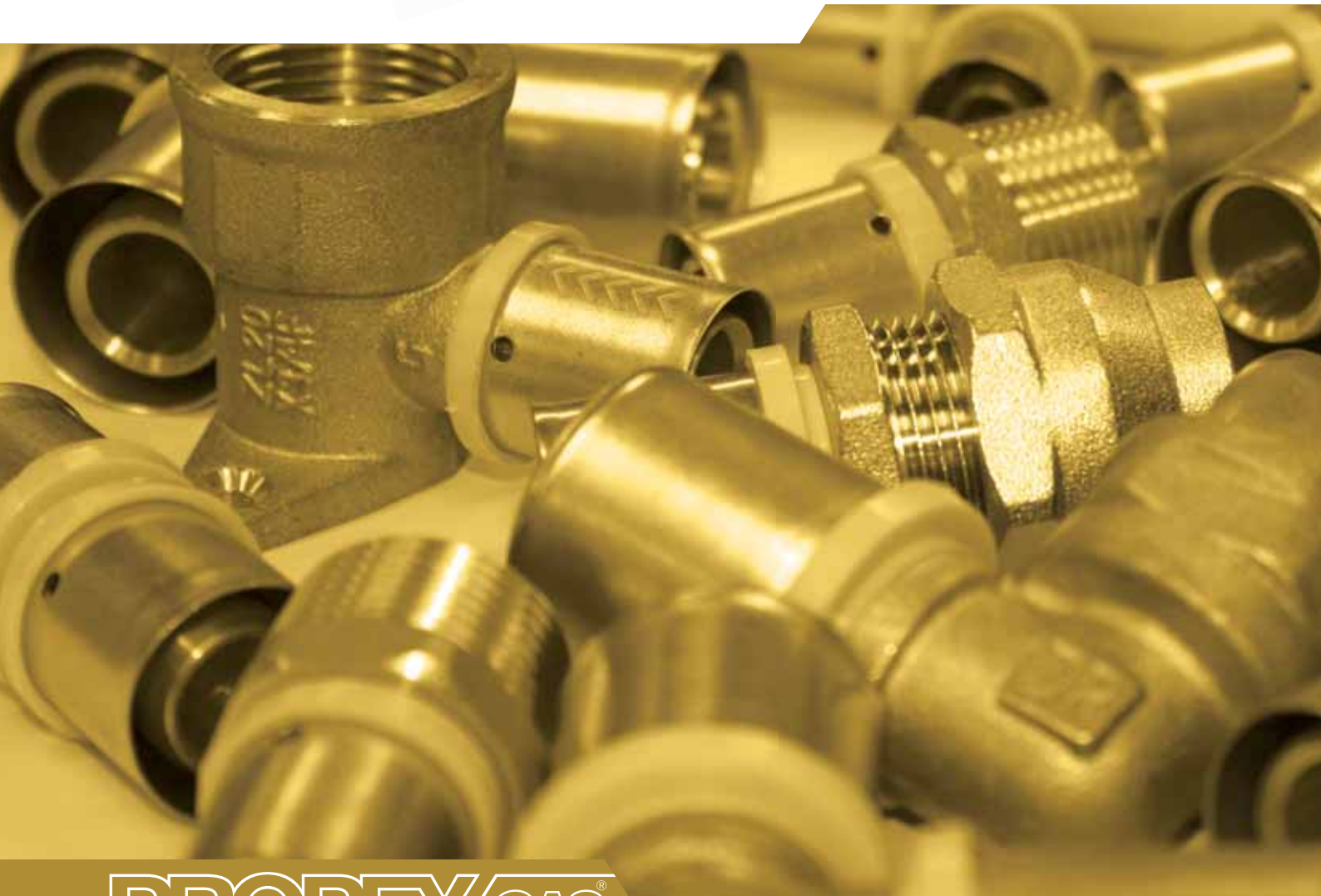
PROPEX GAS® BRASS FITTINGS

GAS INSTALLATIONS MADE QUICK & EASY

Propex Gas brass fittings feature stainless steel crimp sleeves and come complete with two O rings. These high quality fittings have been designed for a quick and easy secure joint system, engineered for seamless integration with our PEX-AL-PEX pipe.



High quality brass fittings specially designed and engineered for seamless integration with Propex Gas PEX-AL-PEX pipe



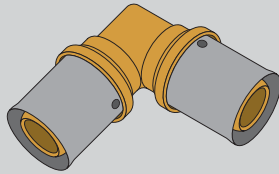
PROPEX GAS® BRASS FITTINGS RANGE



Propex Gas fittings make every job quick and easy, an Australian Standard Certified Product SMKP25582 and complies to AS4176:8:2010. Propex Gas brass fittings are available in sizes ranging from 16 to 50 millimetres.

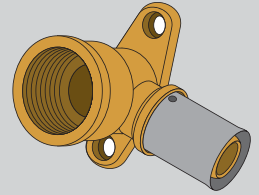
Equal Elbows

Available sizes
16 | 20 | 25
32 | 40 | 50



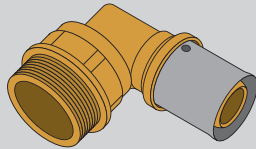
Female Elbows Lugged

Available sizes
16x12 | 20x12 | 20x20



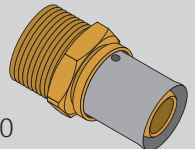
Male Elbows

Available sizes
16x12 | 20x12 | 20x20
25x25 | 32x25 | 32x32



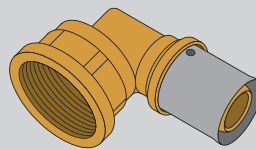
Male Unions

Available sizes
16x12 | 20x12 | 20x20 | 25x12 | 25x20
25x25 | 32x20 | 32x25 | 32x32 | 40x25
40x32 | 40x40 | 50x50



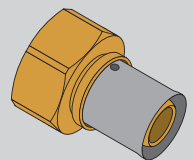
Female Elbows

Available sizes
20x12 | 20x20 | 25x20
25x25 | 32x25



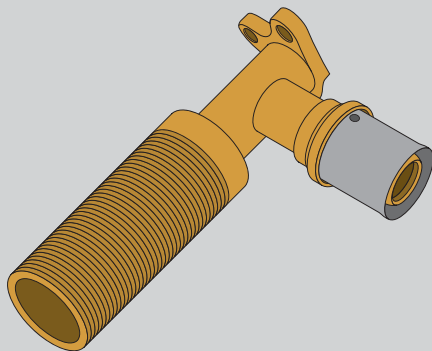
Female Union

Available sizes
16x12 | 16x20 | 20x12 | 20x20
25x20 | 25x25 | 32x20 | 32x25



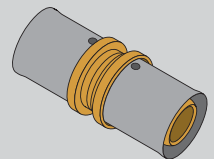
Male Elbows Lugged

Available sizes
20x12x90
20x20x90
20x12x180
20x20x180



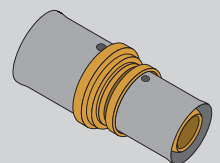
Straight Coupling

Available sizes
16 | 20 | 25
32 | 40 | 50



Reducers

Available sizes:
20x16 | 25x16 | 25x20 | 32x20
32x25 | 40x20 | 40x25 | 40x32
50x25 | 50x32 | 50x40

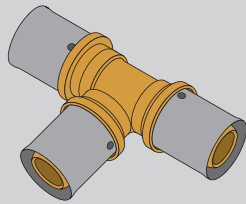


Fittings continued on page 8

PROPEX GAS® BRASS FITTING RANGE Continued

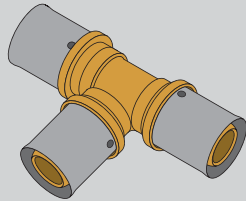
Equal Tees

Available sizes
16 | 20 | 25
32 | 40 | 50



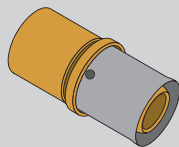
Unequal Tees

Available sizes
20x16x16 | 20x16x20 | 20x20x16
25x20x20 | 25x20x25 | 25x25x20
32x32x20 | 32x32x25 | 40x40x20
40x40x25 | 40x40x32 | 50x50x32
50x50x40



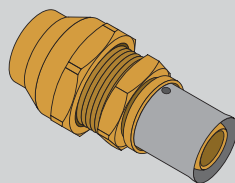
Copper Brazing Tails

Available sizes
16 | 20 | 25

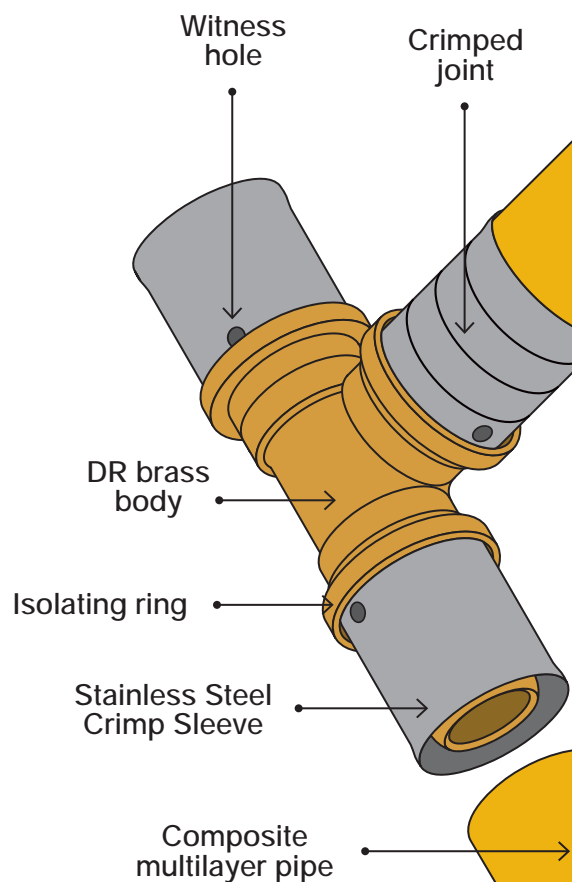


Compression Adaptors

Available sizes:
16x16 | 20x20



Our Propex Gas fittings have been designed to make for a quick and easy secure joint, a perfect alternative for the professional gas fitter and plumber.



PROPEX GAS[®] PIPE

Propex Gas pipe is available in 16, 20, 25, 32, 40 and 50mm diameters, in both straight lengths and coils. Propex Gas pipes have been continuously tested in accordance AS/NZS 4176:8:2010 multilayer pipes for pressure applications.



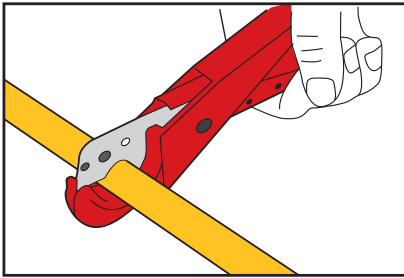
Size	Length	Type
16mm	5 Metre	Straight length
16mm	50 Metre	Coil
20mm	5 Metre	Straight length
20mm	50 Metre	Coil
25mm	5 Metre	Straight length
25mm	50 Metre	Coil
32mm	5 Metre	Straight length
32mm	50 Metre	Coil
40mm	5 Metre	Straight length
50mm	5 Metre	Straight length

Size	Outside diameter (mm)	Wall thickness (mm)
16mm	16.0	2.0
20mm	20.0	2.2
25mm	25.0	2.5
32mm	32.0	3.0
40mm	40.0	3.5
50mm	50.0	4.0

A multilayer piping system, incorporating an aluminium middle layer that creates a flexible solution with the advantages of both metal and plastic pipes

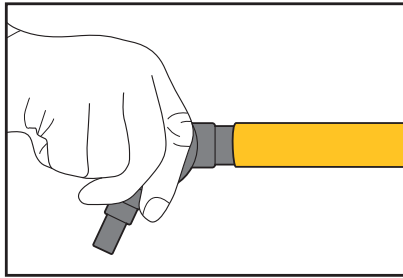
PROPEX GAS® INSTALLATION*

STEP 1



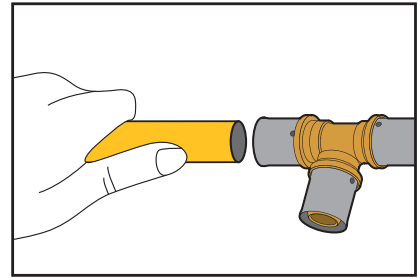
Cut the pipe square to the length of the tubing using the cutting tool.

STEP 2



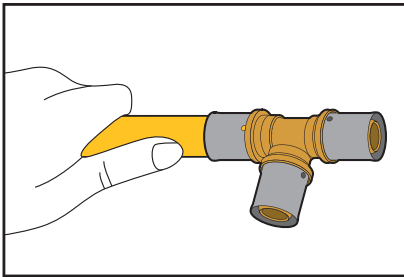
Remove excess material or burrs that might affect fitting connection.

STEP 3



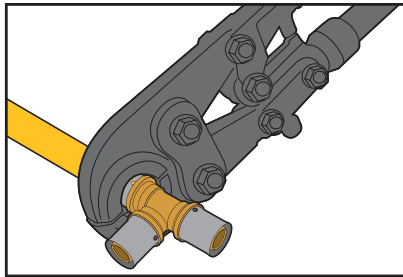
Insert pipe firmly into the crimp sleeve of the fitting body.

STEP 4



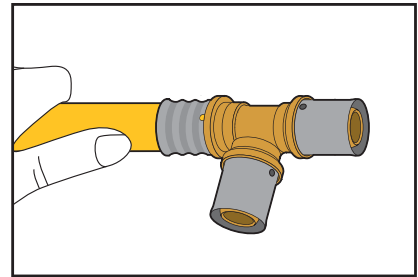
Insert until the pipe end reaches the plastic sight sleeve. Ensure pipe has reached the isolating ring by viewing through the witness hole.

STEP 5



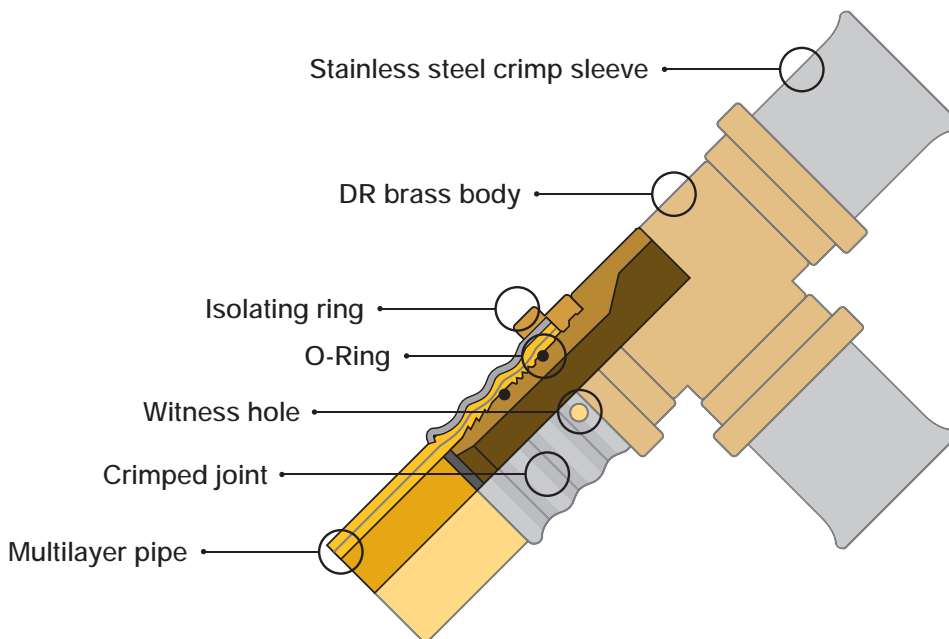
Place the crimp sleeve in the pressing tongs and press until the jaws are completely closed¹.

STEP 6



Open tongs and remove fitting, ensure the fitting body has not been damaged and that there are 3 clear crimp lines around the sleeve.

FITTING TERMINOLOGY



* Only use a licensed plumber.
* Do not mix components from different manufacturers

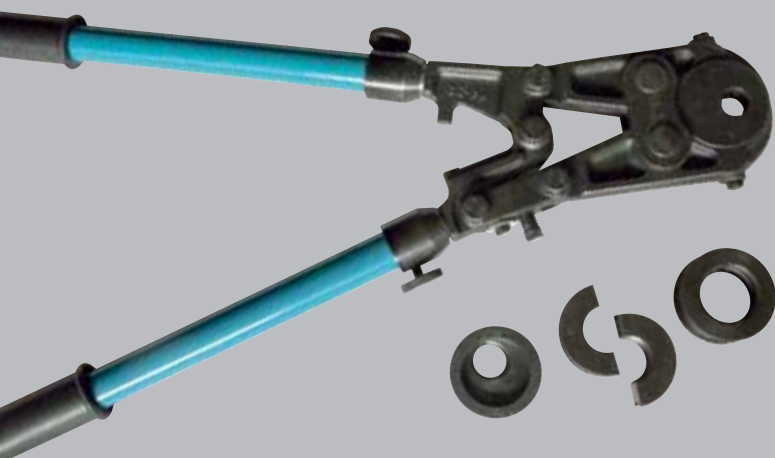
¹ Propex Gas pipe and fittings are securely jointed by the mechanical deformation of the stainless steel crimp sleeve. This deformation is achieved by using Propex Gas pressing tongs. When using the automatic pressing tongs, install the pressing clamp according to the instruction manual. For the manual pressing tongs, close the jaw manually until arms touch.

PROPEX GAS® TOOLS AND ACCESSORIES

EASY TO USE TOOLS

One of the main advantages of choosing Propex Gas piping system is the simplicity of the joining process with inexpensive, clever and easy to use tools.

The manual tool kit contains everything you need to make quick work of your installation, complete in a durable carry case.



Also available is our Propex Gas battery powered tool kit*. A compact, handy and lightweight tool for single hand operation for crimping joints. Complete with carry case, two batteries, charger and interchangeable crimp heads.



* Produced by REMS
12 Month Warranty
2.9kg with battery

ALSO AVAILABLE

PROPEX[®]

PROFESSIONAL PIPE AND FITTINGS

HOT AND COLD WATER
PIPING SYSTEM
25 YEAR WARRANTY
NOW AVAILABLE!

Propex provides advanced piping solutions for plumbing, hot and cold transportation in all building applications from a residential house to industrial and commercial projects.

High quality DZR brass fittings specially designed and engineered for seamless integration with Propex PE-Xb Pipe.



Advanced pex pipe
and fitting system
Full range
Tools available
Competitive pricing!

Propex battery tool kit...
complete with carry case
2 x batteries, charger and
16 - 25 heads

A compact and handy battery powered tool for Propex compression sleeve joints, super light for single hand operation (2.9kg with battery). Produced by REMS and comes with a 12 month warranty.



PROPEX GAS[®]

PROFESSIONAL PIPE AND FITTINGS

Propex Gas pipe and fitting system is backed by a 25 year warranty when installed by a licensed plumber in accordance with manufacturers installation instructions and the Australian Plumbing Code.

Licence number: **SMKP25582**

Propex Gas pipes and fittings have been continuously tested in accordance to, AS/NZS 4176:8:2010 multilayer pipes for pressure applications.



ARIBON
PRODUCTS



www.aribon.com